



# FOREST RELEAF CITY TREE FARM

Concept Package | January 31, 2023



CONCEPT SITE PLAN



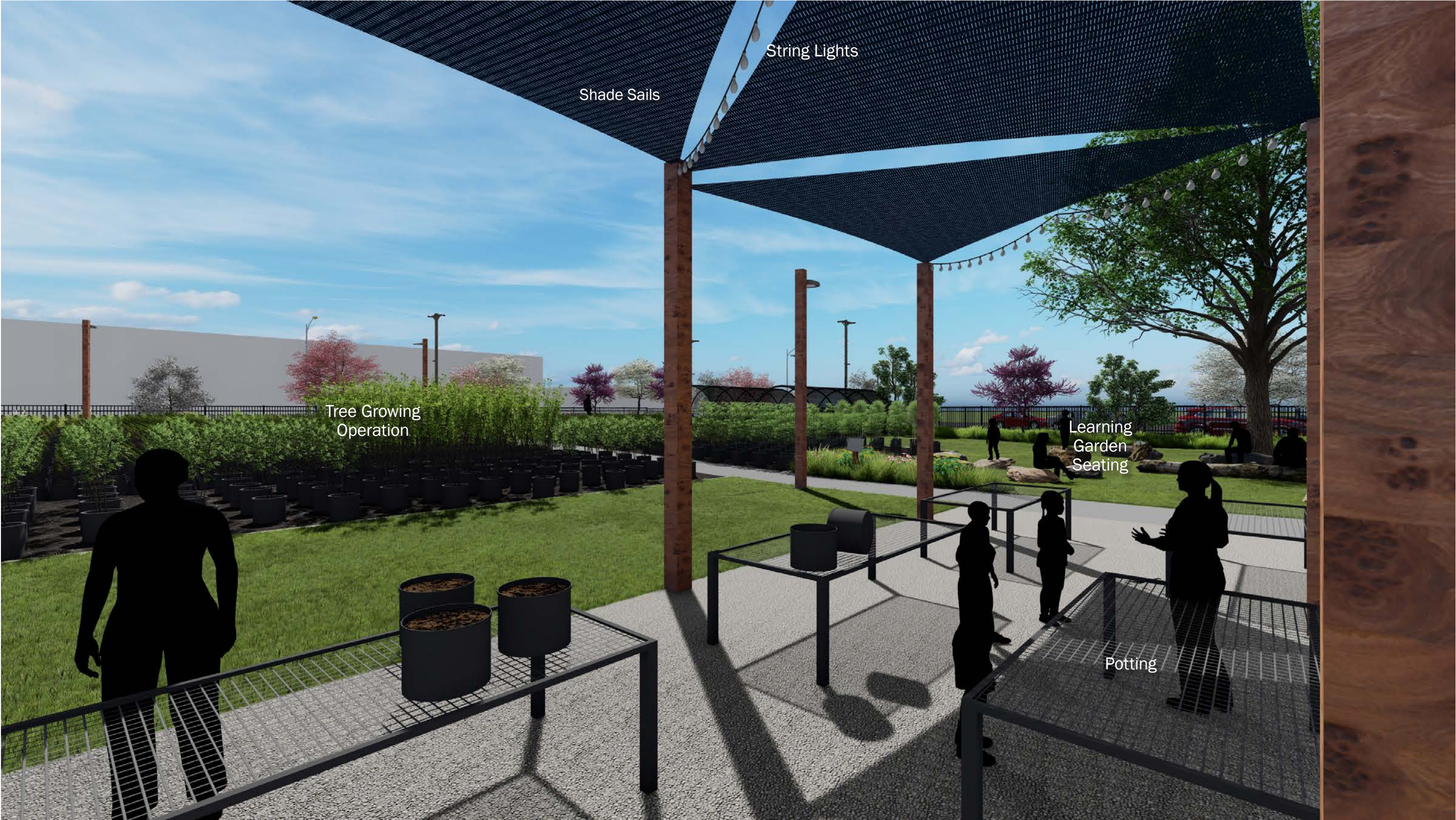


# TREE GROWING OPERATIONS





POTTING AREA



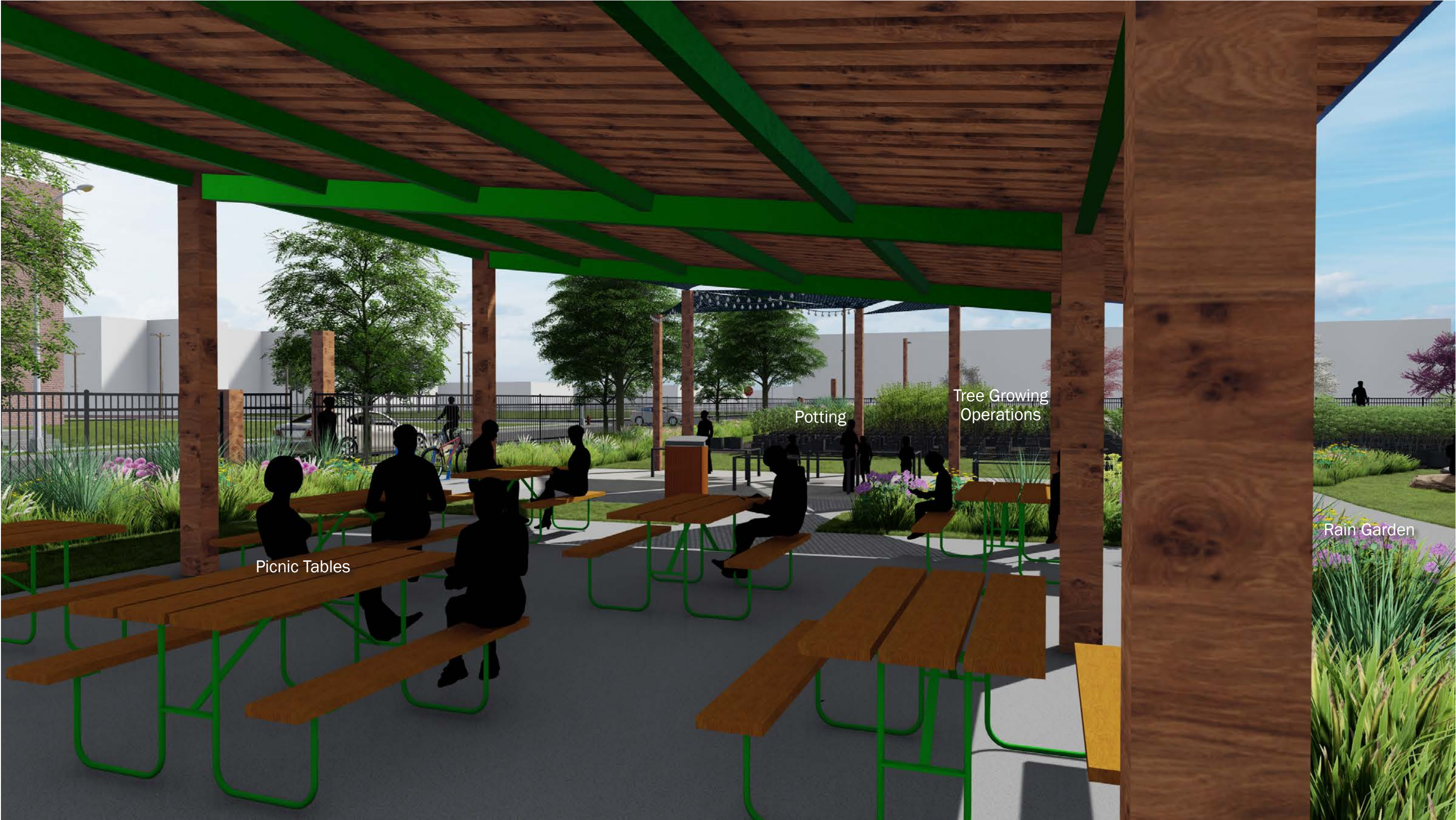


DISTRIBUTION AREA





PAVILION





MATERIALS



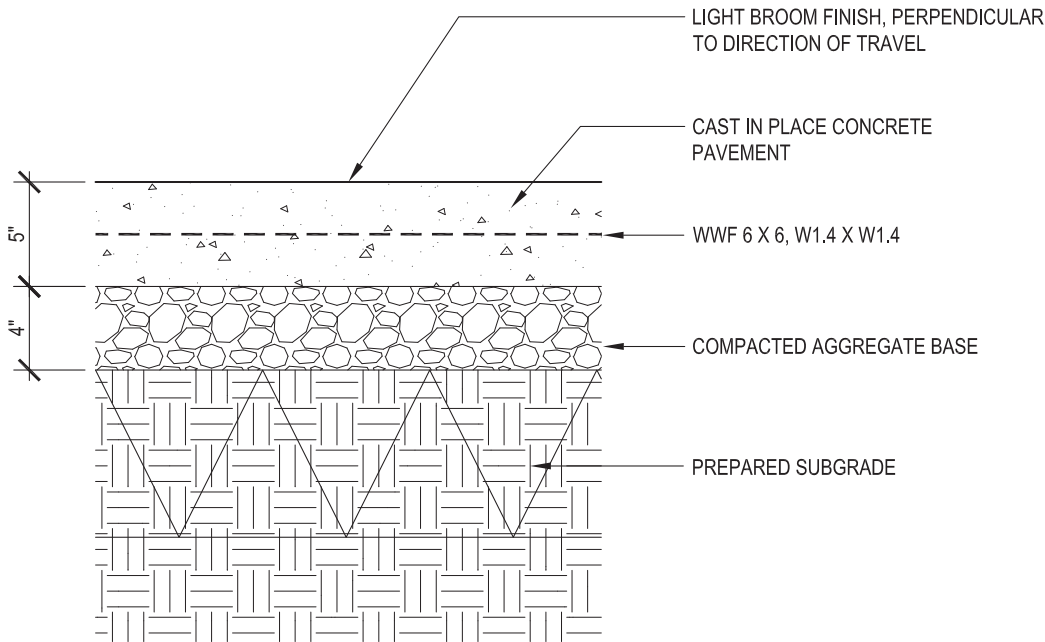
LEGEND

- P1 CONCRETE WALK
- P2 ASPHALT DRIVE
- P3 WEED BARRIER
- P4 3/4" MINUS LIMESTONE GRAVEL
- P5 RECLAIMED BRICK
- S1 PAVILION
- S2 SHED
- S3 SHADE STRUCTURE (2)
- S4 SHADE SAILS (6)
- S5 PORTABLE RESTROOM, ADA (2)
- S6 HANDWASH STATION (1)
- S7 FENCE
- S8 PEDESTRIAN GATE (2)
- S9 VEHICULAR GATE (2)
- S10 YARD HYDRANT (3)
- S11 SIGANGE (2)
- F1 PICNIC TABLE (10)
- F2 POTTING TABLE (5)
- F3 LEARNING GARDEN SEATING
- F4 BIKE RACKS (3)
- F5 TRASH RECEPTACLES (2)
- L1 PEDESTRIAN LIGHT POLE (6)
- L2 STRING LIGHTS

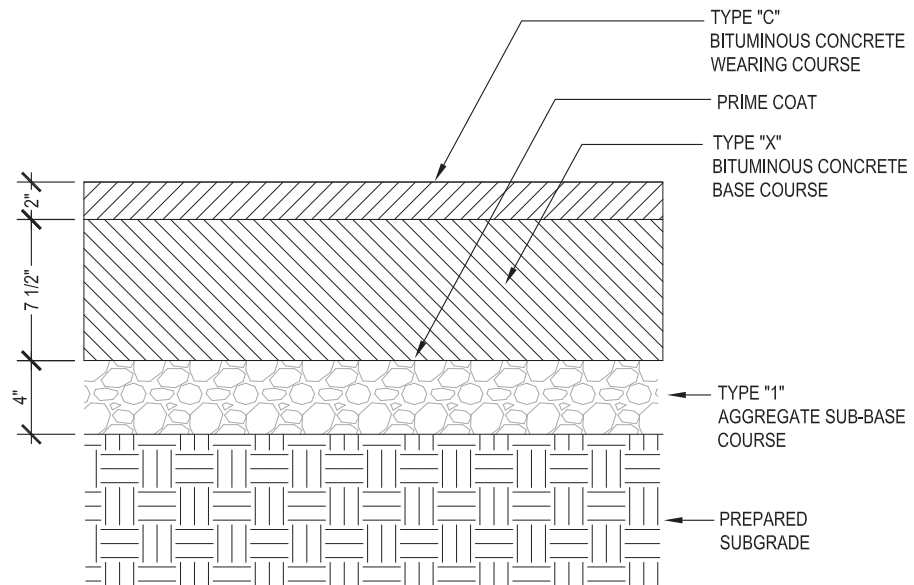


MATERIALS | Pavements

P1 CONCRETE WALK AND STEPS, CITY STANDARD SIDEWALK, BROOMED FINISH



P2 ASPHALT DRIVEWAY AND PARKING





# MATERIALS | Pavements

P3

WEED BARRIER, NEEDLE-PUNCHED, POLYPROPYLENE FABRIC OVER P4

BASIS OF DESIGN:  
Sunbelt Weed Barrier by DeWitt Company  
[www.dewittcompany.com](http://www.dewittcompany.com)

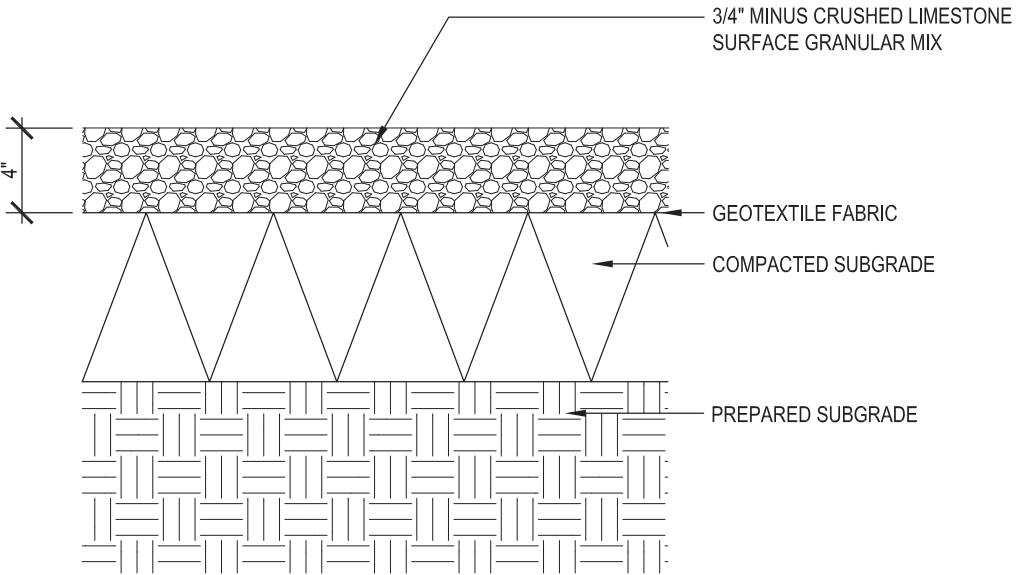


Precedent Image:



P4

3/4" MINUS LIMESTONE GRAVEL, 4" DEPTH

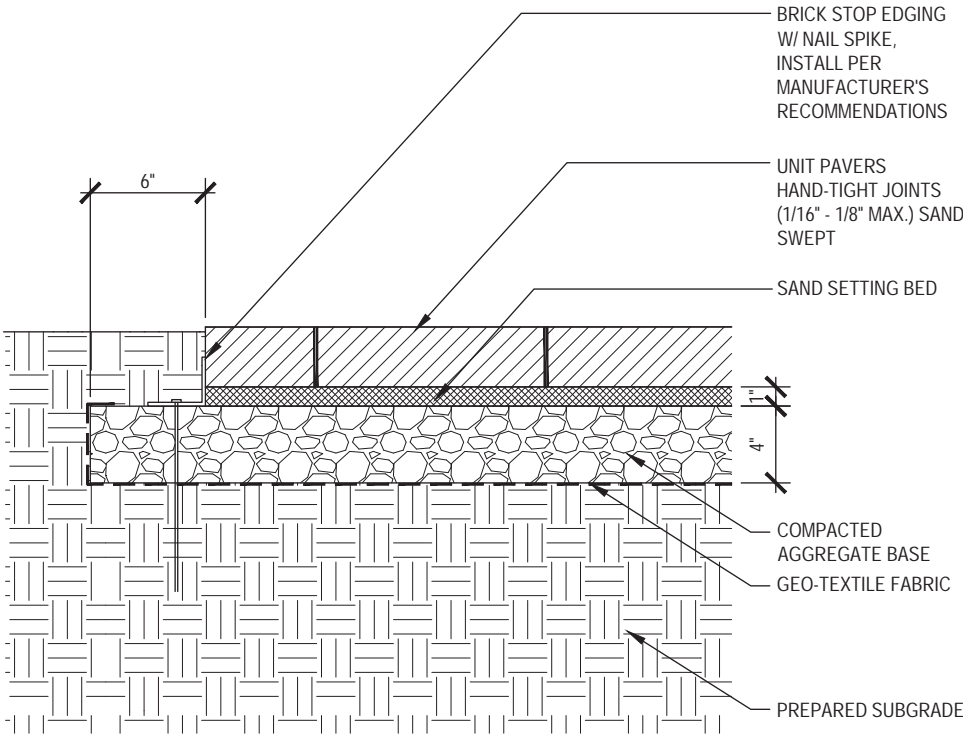




MATERIALS | Pavements

P5

RECLAIMED BRICK EDGE





# MATERIALS | Structures

S1

## PAVILION, 26'X30' RECTANGULAR SHELTER

BASIS OF DESIGN:  
Monoslope by Poligon.  
Standing Seam Metal Roof, Stained Frame and T&G Wood Decking, 4 Electrical  
Cutouts, Wiring for Lighting  
[www.poligon.com](http://www.poligon.com)

Integrate two (2) 50-gal. rain barrels to pavilion gutter system.



S2

## SHED - DIMENSIONS 12'X18'

BASIS OF DESIGN:  
Container Shed by Ingenious Storage  
[shop.ingeniousstorage.com](http://shop.ingeniousstorage.com)  
  
Modern Wood Lean to Shed by Apex Shed Comapny  
[www.apexshedcompany.com](http://www.apexshedcompany.com)



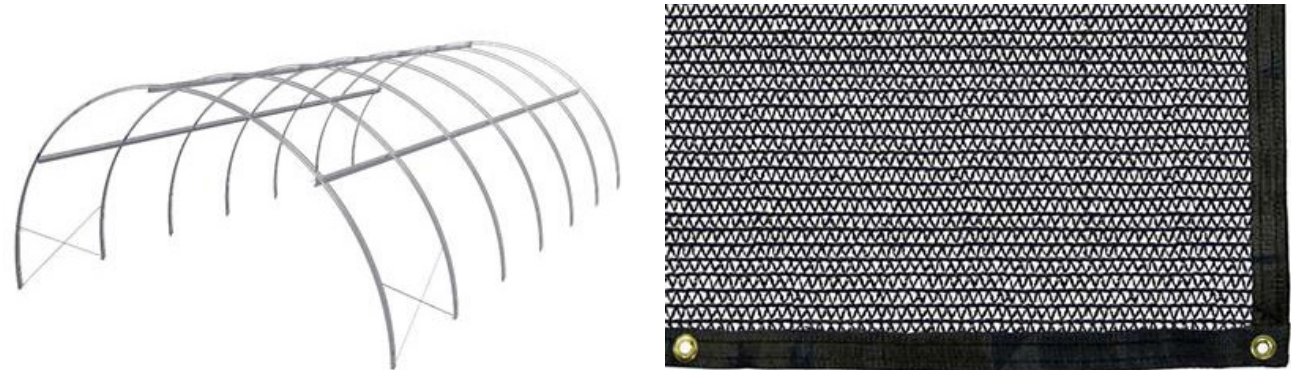


MATERIALS | Structures

S3

SHADE STRUCTURE, 16'X24'

BASIS OF DESIGN:  
Hoop House Frame and Garden Grewer Shade Cloth by Greenhouse Megastore  
[www.greenhousemegastore.com](http://www.greenhousemegastore.com)



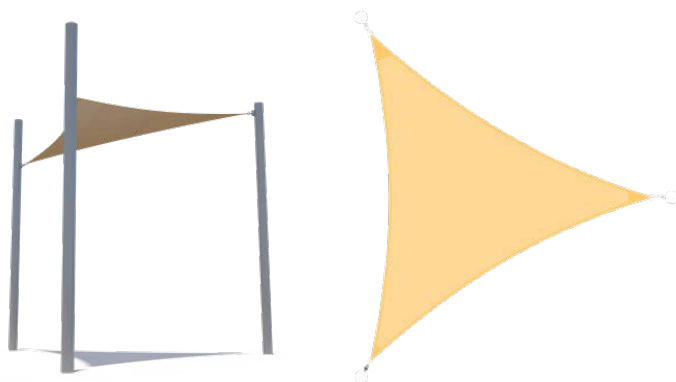
Precedent Image:



S4

SHADE SAILS, 15'

BASIS OF DESIGN:  
15' 3-point sails by USA Shade on Spar poles by Structura (see L1)  
<https://www.usa-shade.com/>



Precedent Image:





# MATERIALS | Structures

**S5** PORTABLE RESTROOM, ADA ACCESSIBLE, LONG-TERM RENTAL BY OWNER\*  
BASIS OF DESIGN:  
Liberty Wheelchair Accessible in Dark Gray by Satellite Industries  
[www.satelliteindustries.com](http://www.satelliteindustries.com)

**S6** HANDWASH STATION, LONG-TERM RENTAL BY OWNER\*  
BASIS OF DESIGN:  
Tag 4 Freestanding Handwash Station by Satellite Industries  
[www.satelliteindustries.com](http://www.satelliteindustries.com)

- \* LONG-TERM RENTAL SERVICES IN THE ST. LOUIS REGION:
- St. Louis Recycling & Waste Solutions
  - Portable Water Closet, LLC
  - Tisa Porta Potty Rental St. Louis
  - Budget Porta Potty



6' WOODEN SCREEN FENCE AT RESTROOMS - TWO SIDES, CONNECT TO STORAGE SHED





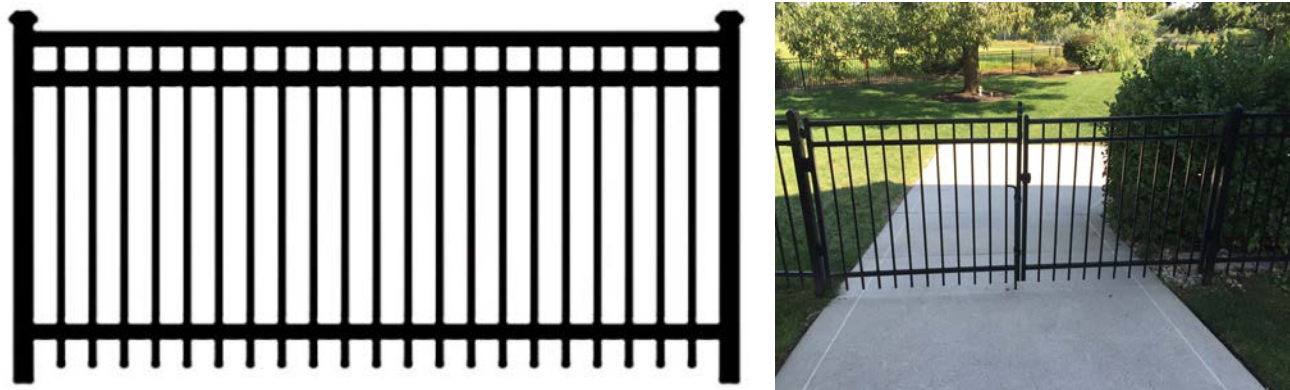
MATERIALS | Structures

S7

S8

FENCE AND 8’ WIDE PEDESTRIAN GATE, 6’ HT., SINGLE SWING WITH LOCKING SYSTEM

BASIS OF DESIGN:  
Montage II Majestic, 3-Rail Panel by Ameristar  
[www.ameristarperimeter.com/us/en](http://www.ameristarperimeter.com/us/en)



Precedent Image:



S9

VEHICULAR GATE, SINGLE SLIDE, 12’ WIDE OPENING

BASIS OF DESIGN:  
TransPort II Majestic Cantilever Gate by Ameristar  
[www.ameristarperimeter.com/us/en](http://www.ameristarperimeter.com/us/en)





MATERIALS | Structures

S10

YARD HYDRANT  
BASIS OF DESIGN:  
Frost Proof Yard Hydrant by Woodford  
www.woodfordmfg.com



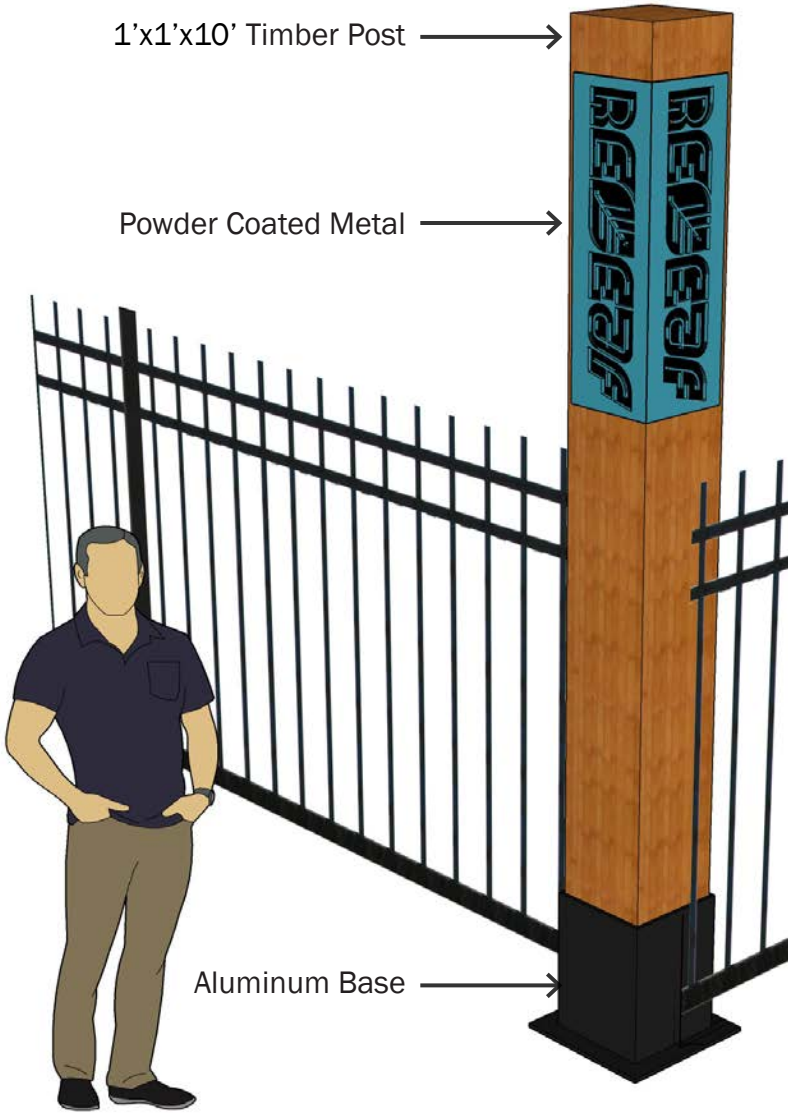
Precedent Image:



S11

SIGANGE  
BASIS OF DESIGN:  
Custom, similar style and construction to Spar Pole by Structura (See L1)  
Timber Post with Square Extruded Aluminum Pole Base and Powder Coated Metal  
Signage

Precedent Image:





MATERIALS | Furnishings

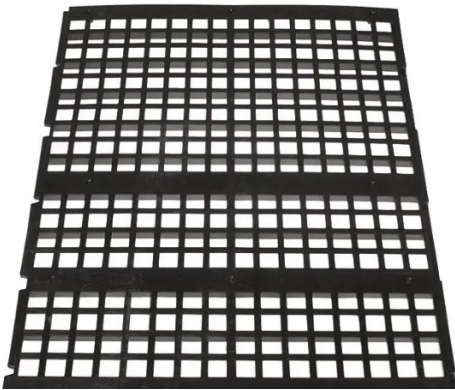
F1

PICNIC TABLE, 6'  
BASIS OF DESIGN:  
WXTH Accessible Picnic Table - using  
Lumber by Pilot Rock  
[www.pilotrock.com](http://www.pilotrock.com)



F2

POTTING TABLE, 6'X3'X36"  
BASIS OF DESIGN:  
Dura-Bench by A.M. Leonard  
[www.amleo.com](http://www.amleo.com)

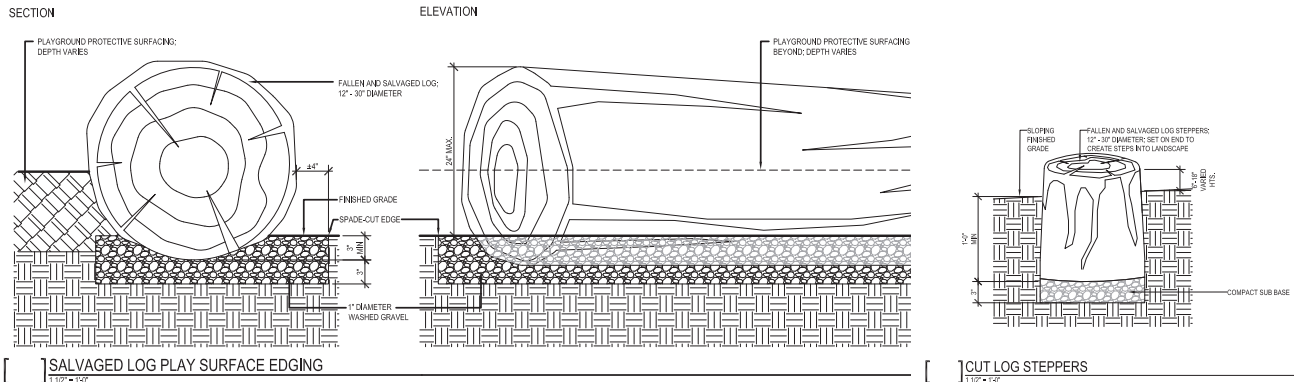




# MATERIALS | Furnishings

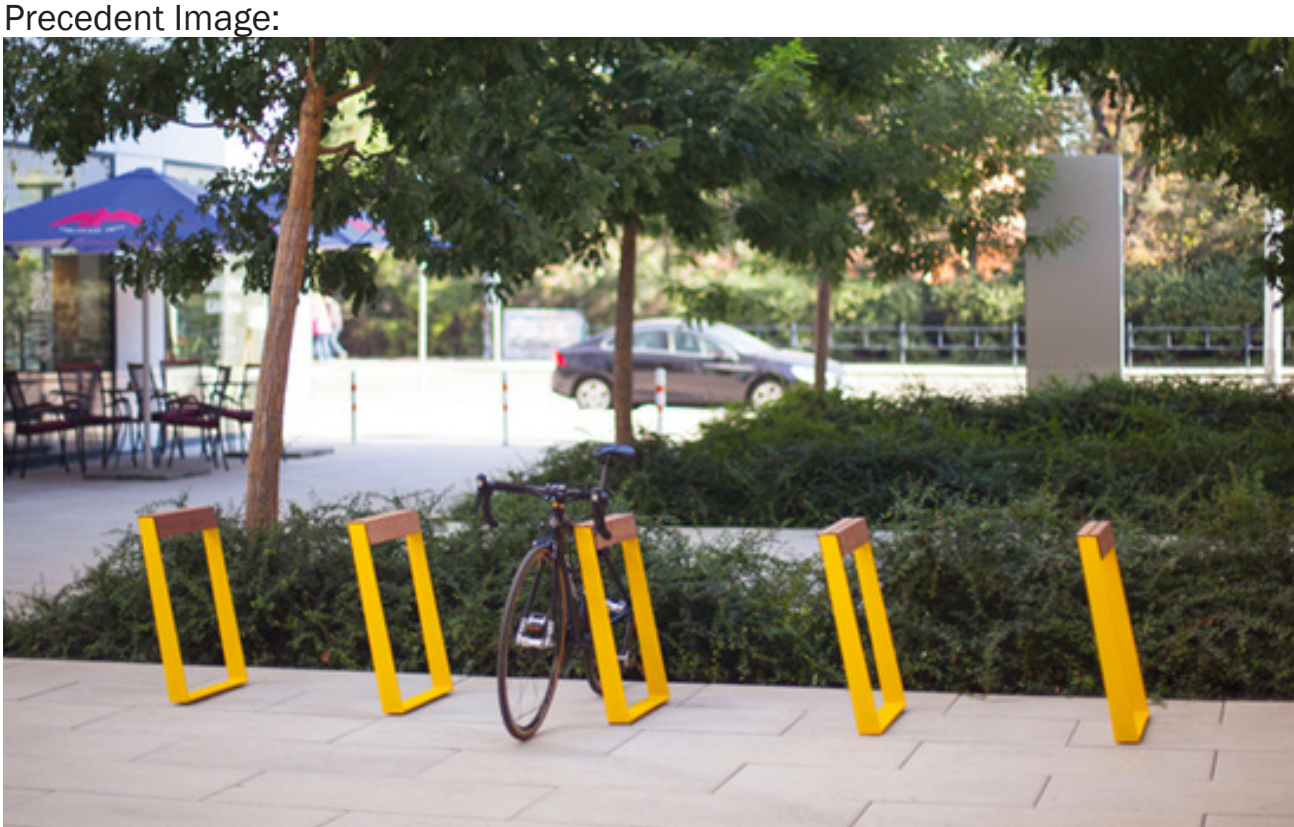
F3

LEARNING GARDEN SEATING  
BASIS OF DESIGN:  
Custom or Salvaged Materials - Logs and Boulders



F4

BIKE RACK  
BASIS OF DESIGN:  
Bikeblocq by mmcite  
<https://www.mmcite.com/us>





# MATERIALS | Furnishings

F5

## LITTER/RECYCLING RECEPTACLES

BASIS OF DESIGN:  
Maximinium by mmcite  
[www.mmcite.com/us](http://www.mmcite.com/us)



Precedent Image:





# MATERIALS | Lighting

L1

PEDESTRIAN LIGHT POLE/FIXTURE, 14’ HIGH  
BASIS OF DESIGN:  
Spar by Structura  
www.structura.com



Precedent Image:



L2

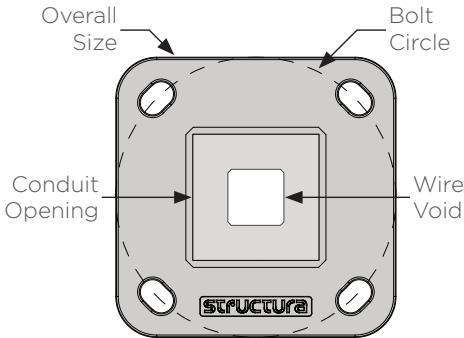
FESTOON STRING LIGHTS  
BASIS OF DESIGN:  
Exhibitor by Tokistar Lighting  
www.tokistar.com



Precedent Image:



FESTOON POLES, 14’ HIGH  
BASIS OF DESIGN:  
Spar by Structura  
www.structura.com





PLANTING



LEGEND

- PA1 STREET TREES
- PA2 UNDERSTORY TREES
- PA3 SHRUBS
- PA4 SAVANNA MIX
- PA5 UNDERSTORY MIX
- PA6 ENTRY GARDEN
- PA7 BUTTERFLY GARDEN
- PA8 RAIN GARDEN
- PA9 SOIL / MULCH



PLANTING | Street Trees

PA1

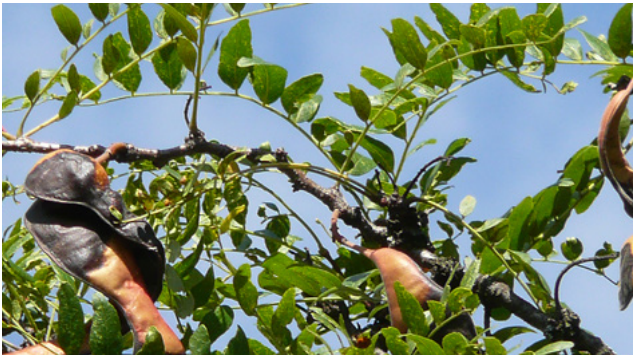
CANOPY TREES  
B&B, 3" CALIPER

REPRESENTATIVE SPECIES:  
Liriodendron tulipifera  
Gleditsia triacanthos  
Gymnocladus dioica  
Platanus occidentalis  
Quercus rubra  
Taxodium distichum  
Pinus echinata  
Nyssa sylvatica

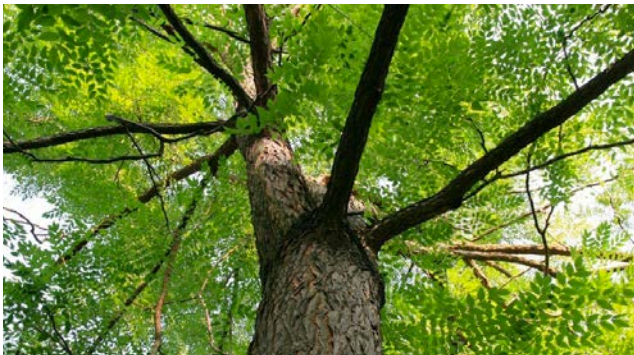
Character Images:



Liriodendron tulipifera



Gleditsia triacanthos



Gymnocladus dioica



Platanus occidentalis



Quercus rubra



Taxodium distichum



Pinus echinata



Nyssa sylvatica



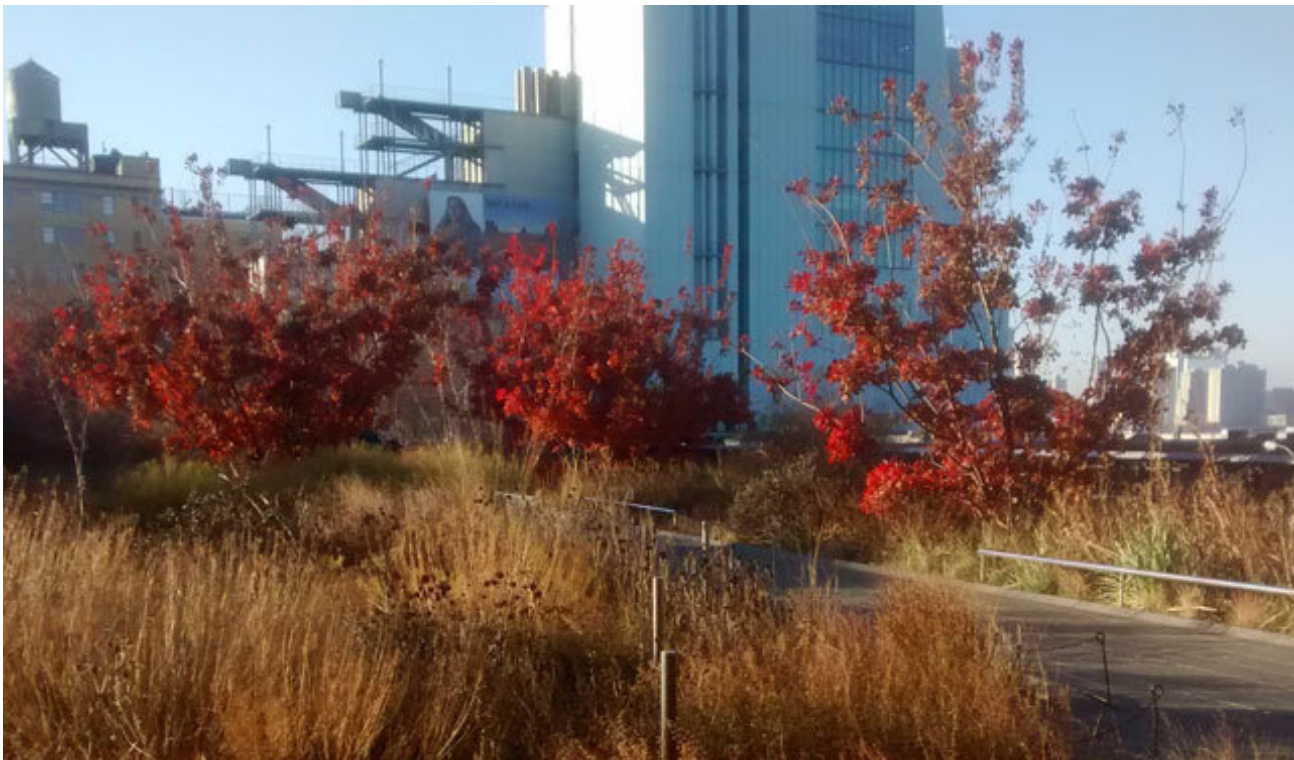
PLANTING | Understory Trees

PA2

UNDERSTORY TREES  
B&B, 2-3" CALIPER OR 10' HT.

REPRESENTATIVE SPECIES:  
Cercis occidentalis  
Cotinus obovatus  
Cornus spp.  
Betula nigra  
Chionanthus virginicus  
Juniperus virginiana  
Amelanchier spp.  
Magnolia spp.

Character Images:



Cercis occidentalis



Cotinus obovatus



Cornus spp.



Betula nigra



Chionanthus virginicus



Juniperus virginiana



Amelanchier spp.



Magnolia spp.



PLANTING | Shrubs

PA3

SHRUBS  
B&B, 2-3" CALIPER OR 10' HT.

REPRESENTATIVE SPECIES:  
Amorpha fruticosa  
Callicarpa americana  
Cephalanthus occidentalis  
Hamamelis vernalis  
Ilex decidua  
Physocarpus opulifolius  
Rhus aromatica  
Viburnum dentatum

Character Images:



Amorpha fruticosa



Callicarpa americana



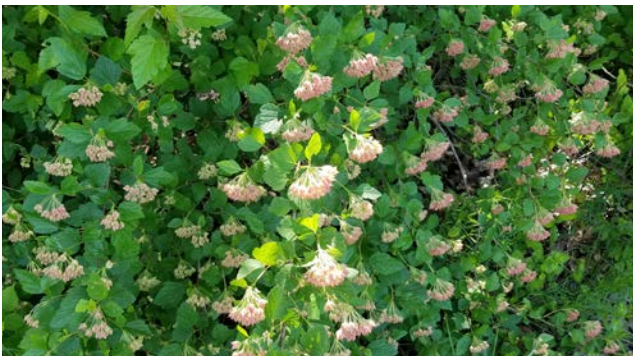
Cephalanthus occidentalis



Hamamelis vernalis



Ilex decidua



Physocarpus opulifolius



Rhus aromatica



Viburnum dentatum



PLANTING | Savanna Mix

PA4

SAVANNA  
QUART-SIZE PLANTS AT 12"-18" O.C.

REPRESENTATIVE SPECIES:  
Sporobolus spp.  
Carex spp.  
Echinacea spp.  
Rudbeckia spp.  
Liatris spp.  
Asclepias spp.  
Symphyotricum spp.  
Pennisetum alopecuroides

Character Images:



Sporobolus spp.



Carex spp.



Echinacea spp.



Rudbeckia spp.



Liatris spp.



Asclepias spp.



Symphyotricum spp.



Pennisetum alopecuroides



PLANTING | Understory Mix

PA5

UNDERPLANTING  
QUART-SIZE PLANTS AT 12"-18" O.C.

REPRESENTATIVE SPECIES:  
Aquilegia spp.  
Monarda bradburiana  
Heuchera spp.  
Anenome spp.  
Eupatorium spp.  
Echinacea Purpurea  
Packera spp.  
Carex spp.

Character Images:



Aquilegia spp.



Monarda bradburiana



Heuchera spp.



Anenome spp.



Eupatorium spp.



Echinacea Purpurea



Packera spp.



Carex spp.



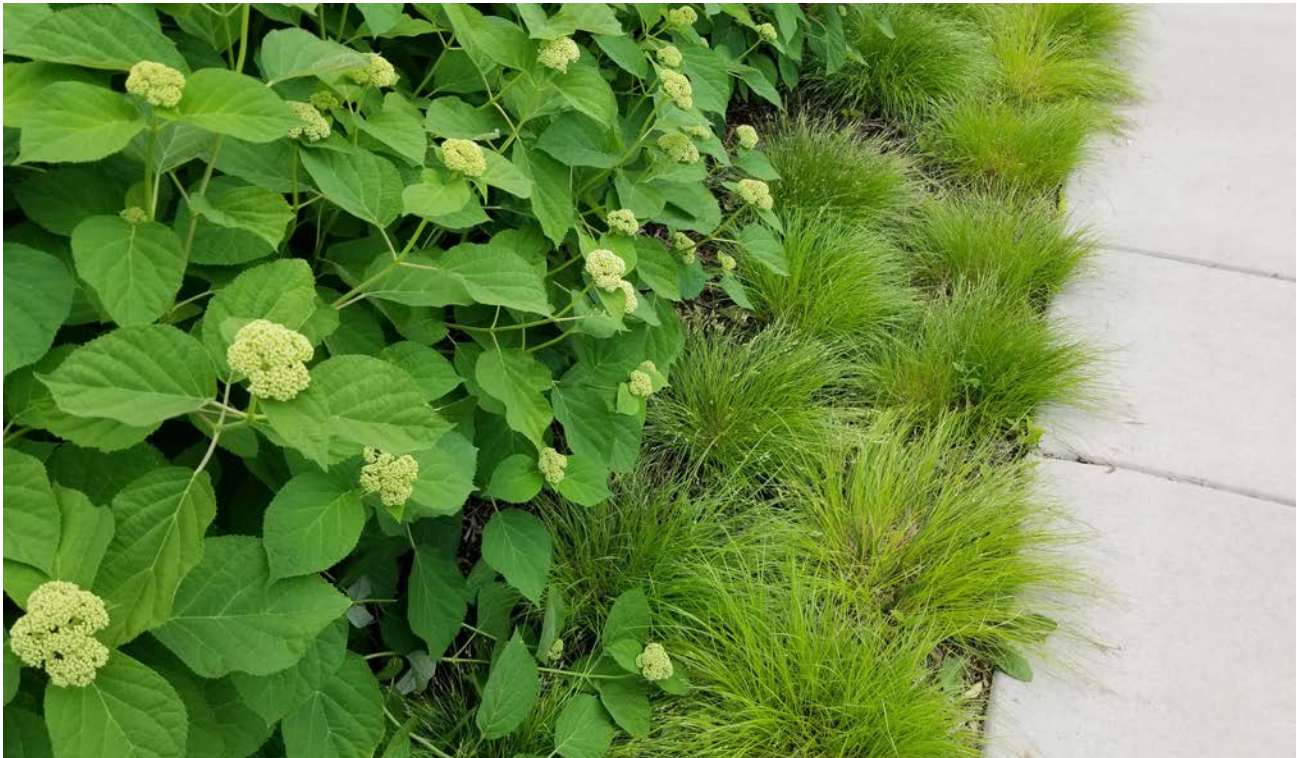
# PLANTING | Entry Garden

PA6

ENTRY GARDEN PLANT BED  
QUART- TO GAL-SIZED PLANTS AT 12”-  
18” O.C.

REPRESENTATIVE SPECIES:  
Baptisia australis  
Carex albicans  
Heuchera parviflora  
Hydrangea arborescens  
Oenothera macrocarpa  
Rudbeckia fulgida var. umbrosa  
Sporobolus heterolopis  
Symphyotrichum oblongifolium

Character Images:



Baptisia australis



Carex albicans



Heuchera parviflora



Hydrangea arborescens



Oenothera macrocarpa



Rudbeckia fulgida var. umbrosa



Sporobolus heterolopis



Symphyotrichum oblongifolium



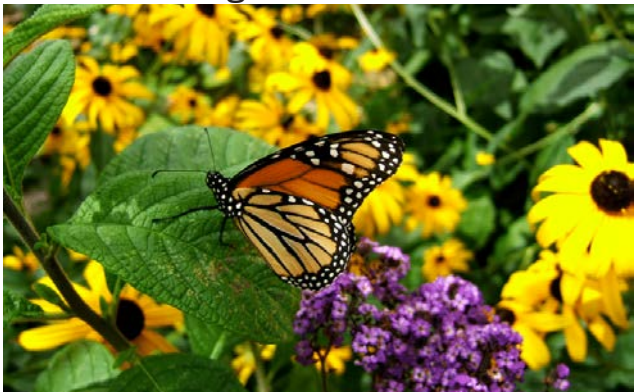
# PLANTING | Butterfly Garden

PA7

BUTTERFLY GARDEN  
PLUGS AND QUART-SIZED PLANTS AT  
6"-12" O.C.

REPRESENTATIVE SPECIES:  
Asclepias spp.  
Echinacea purpurea  
Monarda bradburiana  
Pycnanthemum tenuifolium  
Rudbeckia fulgida  
Solidago drummondii  
Symphyotrichum novae-angliae

Character Images:



Asclepias spp.



Asclepias spp.



Echinacea purpurea



Monarda bradburiana



Pycnanthemum tenuifolium



Rudbeckia fulgida



Solidago drummondii



Symphyotrichum novae-angliae



# PLANTING | Rain Garden

PA8

RAIN GARDEN  
PLUGS AND QUART-SIZED PLANTS AT  
6"-12" O.C.

REPRESENTATIVE SPECIES:  
Juncus spp.  
Carex spp.  
Iris spp.  
Amsonia spp.  
Conoclinium spp.  
Filipendula rubra  
Zizia aurea  
Panicum spp.

Character Images:



Juncus spp.



Carex spp.



Iris spp.



Amsonia spp.



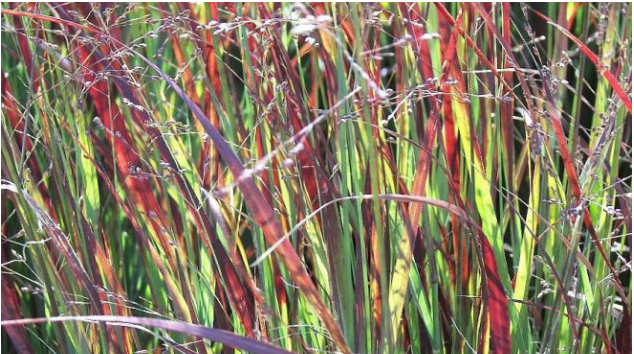
Conoclinium spp.



Filipendula rubra



Zizia aurea



Panicum spp.



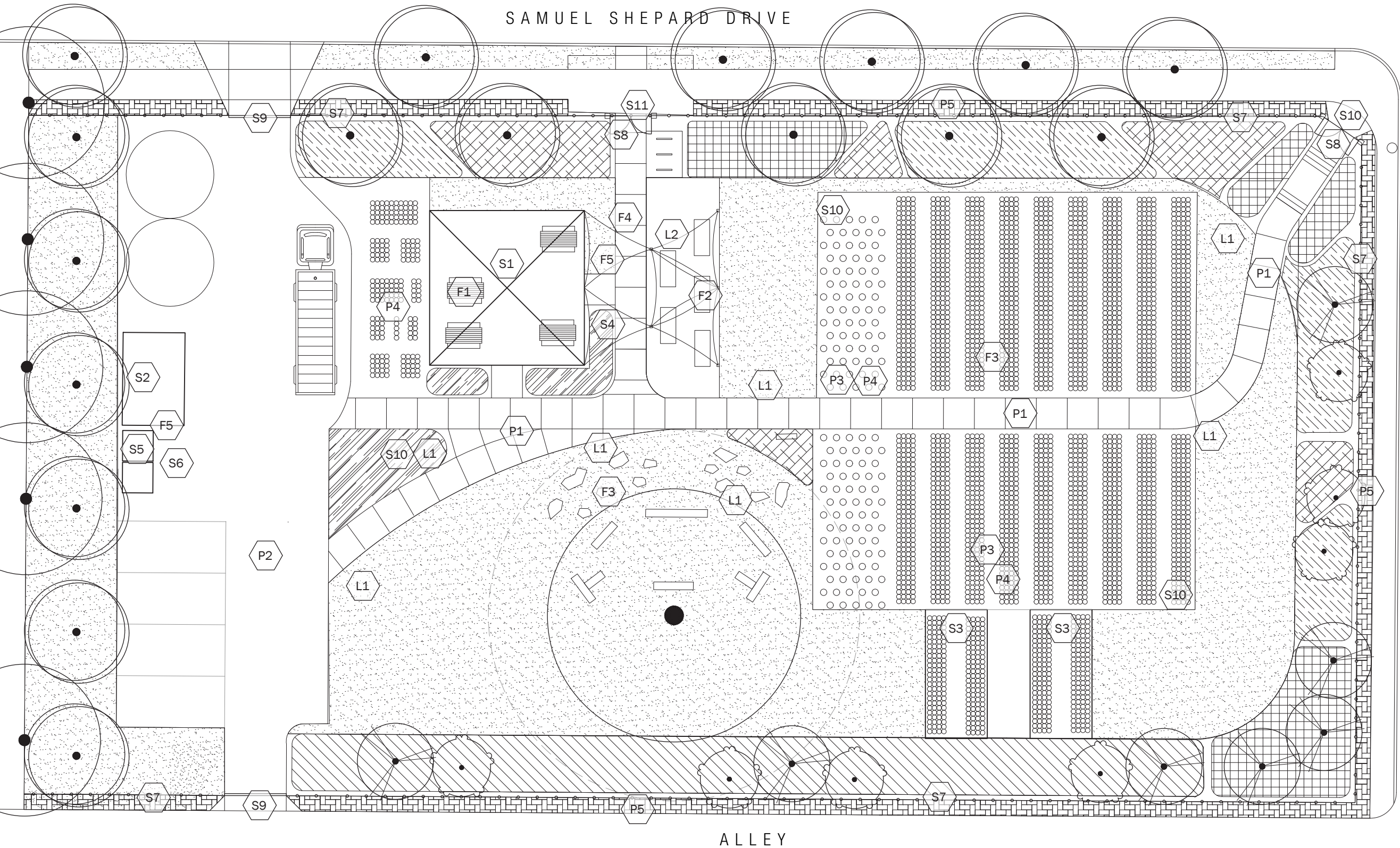


# Forest ReLeaf City Tree Farm

Appendix | January 31, 2023



CAD MATERIAL PLAN



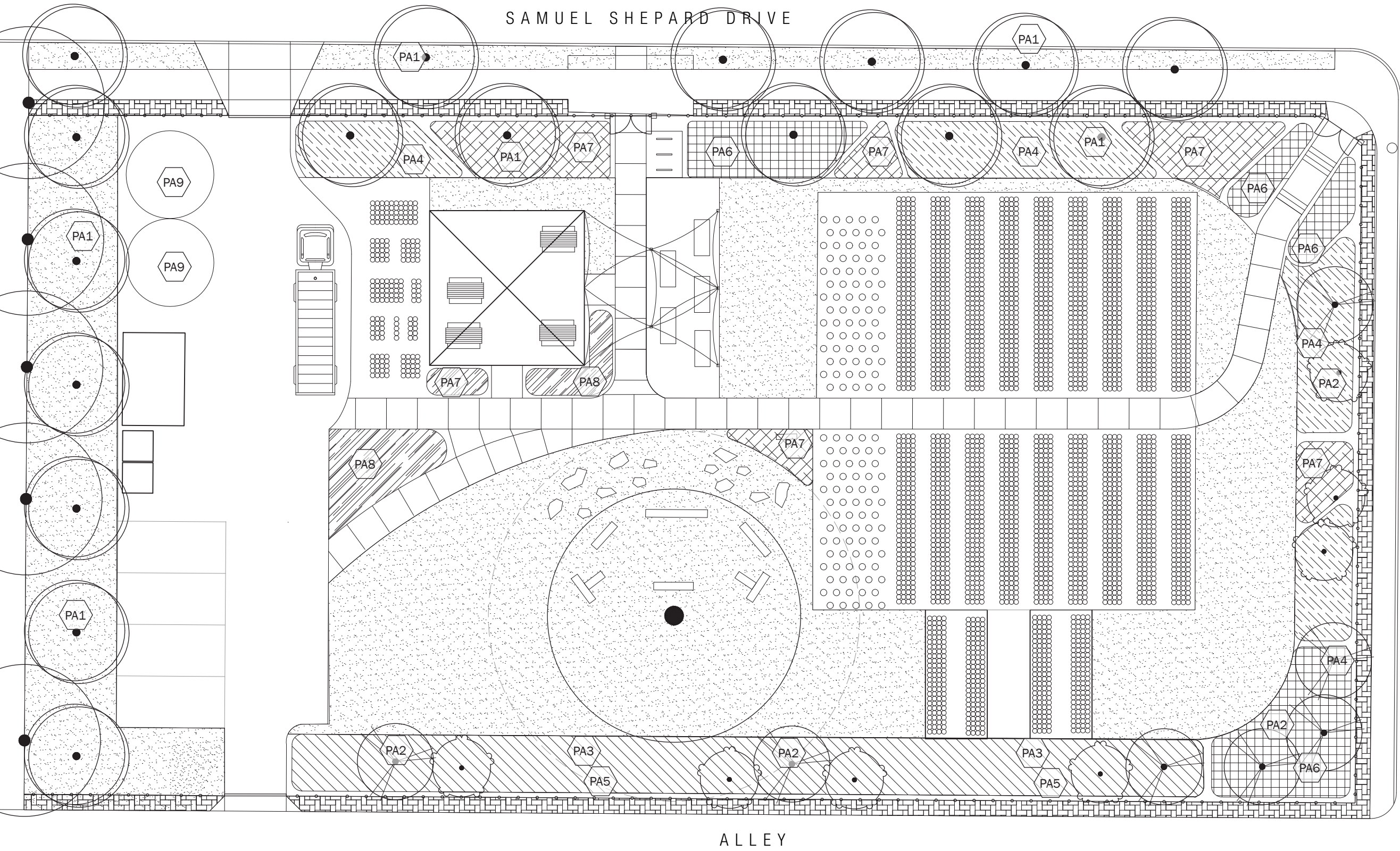
- LEGEND
- P1 CONCRETE WALK
  - P2 ASPHALT DRIVE
  - P3 WEED BARRIER
  - P4 3/4" MINUS LIMESTONE GRAVEL
  - P5 RECLAIMED BRICK
  - S1 PAVILION
  - S2 SHED
  - S3 SHADE STRUCTURE (2)
  - S4 SHADE SAILS (6)
  - S5 PORTABLE RESTROOM, ADA (2)
  - S6 HANDWASH STATION (1)
  - S7 FENCE
  - S8 PEDESTRIAN GATE (2)
  - S9 VEHICULAR GATE (2)
  - S10 YARD HYDRANT (3)
  - S11 SIGANGE (2)
  - F1 PICNIC TABLE (10)
  - F2 POTTING TABLE (5)
  - F3 LEARNING GARDEN SEATING
  - F4 BIKE RACKS (3)
  - F5 TRASH RECEPTACLES (2)
  - L1 PEDESTRIAN LIGHT POLE (6)
  - L2 STRING LIGHTS

[ 1 ] MATERIALS PLAN  
1" = 10'





CAD PLANTING PLAN



[ 1 ] MATERIALS PLAN  
1" = 10'





# PROJECT GOALS



The goal of this project is to create an City Tree Farm for Forest ReLeaf. The concept of the City Tree Farm is of a “Resilient Canopy” - planting trees that are best for urban situations and creating a space that is welcome to all.

Programs/amenities to be incorporated:

- Work, potting and distribution hub
- Growing operations area
- Education outreach and engagement
- Minimum of 1000 3-gallon trees
- Educational “example” landscapes
- Pavilion / Shade Structure





EXISTING CONDITIONS | Site Photos



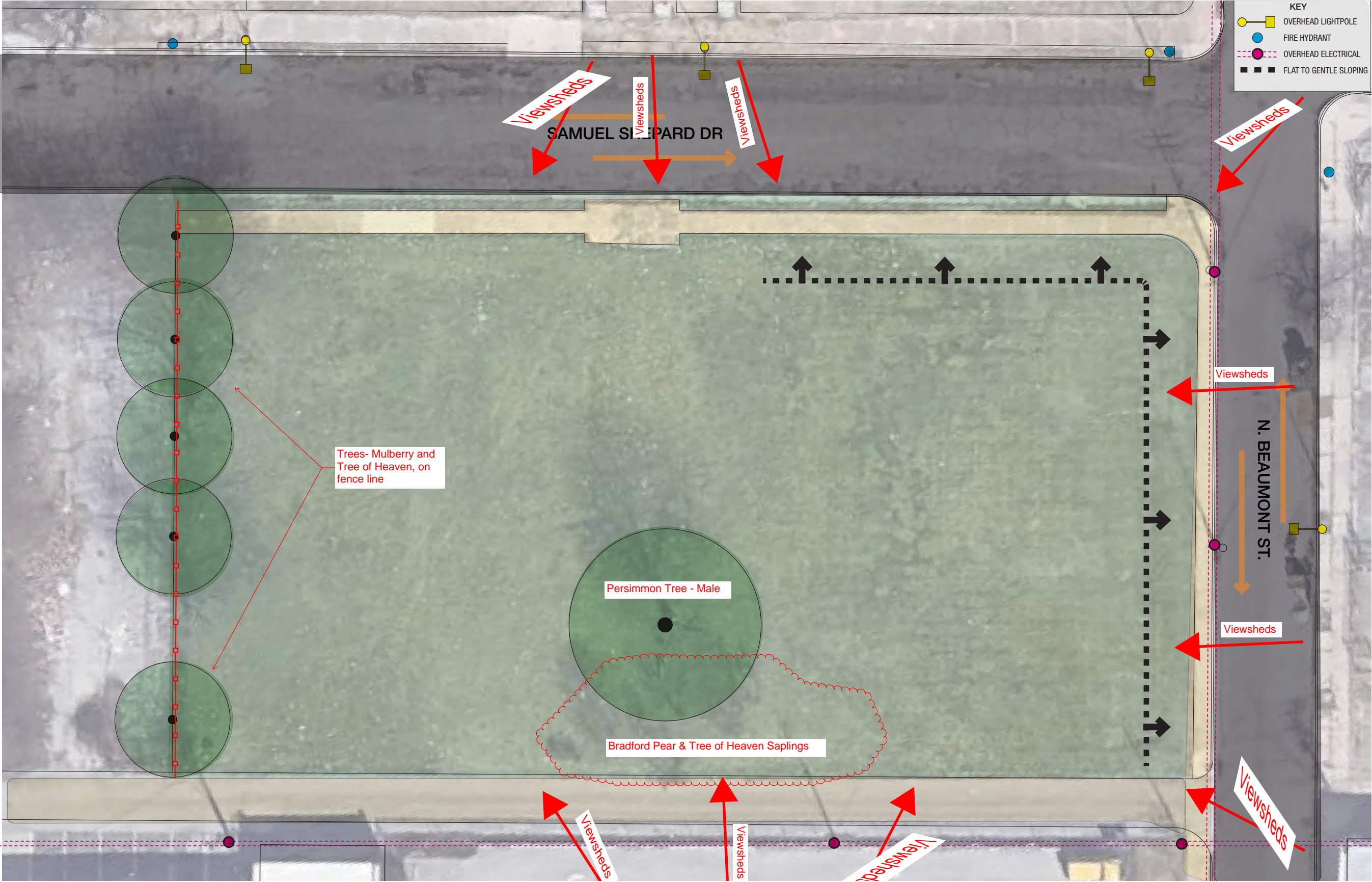
Facing Northeast



Facing Southwest



EXISTING CONDITIONS | Site Plan





CONCEPT DESIGN | Program



Nursery



Staging and Distribution



Volunteering



Gathering



Education / Outreach



Events



CONCEPT SITE PLAN | Program and Operations

