

2022

ANNUAL REPORT

“What a friend we have in a tree, the tree is the symbol of hope, self improvement and what people can do for themselves.”

Wangari Maathai

Forest
ReLeaf
OF MISSOURI





2022 Impact

 **11,927**
Trees Planted

Planting Projects
319



 **19,500**
Seedlings Potted

63 Species



Missourians Engaged
14,600



Board of Directors

Jason Pratte
President
St. Louis County Parks

Joni Ott
Vice President
Retired Attorney

John Moller
Treasurer
Retired Financial Advisor

Tim Brunsmann
City of Richmond Heights

Patrick Brown
Ameren

Tom Jacobs
Mid-America Regional Council

Almetta Jordan
Missouri State Parks

Alan Jankowski
City of St. Louis Forestry

Cindy M. Lewis
Commerce Trust Company

Danny Moncheski
SiteOne Landscaping

Aisha Muhammad
Missouri Department of Conservation

Sean Pluta
Polsinelli

George Satkowski
Enterprise

Mary Sherfy
Retired Marketing Professional

Jesse Stuart
Crispy Edge

Sheila S. Voss
Good Food Institute

Kara Ward
Barnes Jewish Hospital

Note from the Executive Director

Dear Friends,

Scientists estimate the first trees grew on earth 380 million years ago. Until very recently, our planet had 6 trillion trees. Humans have cut that number to 3 trillion and as our communities grow, the native landscapes that support them continue to shrink. This has resulted in catastrophic changes to our climate with mass plant and animal extinctions.

In Missouri we want to change this trajectory. We value our forests, rural and urban. And are working to protect and rebuild them.

Last year, more than 6,000 volunteers helped plant over 11,000 native trees from Forest ReLeaf's nursery. From the teacher who plants one tree with her students in their school's front yard; block captains who coordinate the planting of five trees in a neighborhood pocket park; the city forester who plants 50 trees on residential streets, and the land manager who plants 200 trees along the banks of rivers and creeks, these are our valuable partners.



Thank you for being a part of our team,

Meredith Perkins
Meredith McAvoy Perkins
Executive Director

Looking to the Future

In 2022 our Board completed a strategic plan, recommitting to Forest ReLeaf's mission, "planting trees and enriching communities by growing, providing, and planting trees through the power of people and partnerships." This mission has inspired us for 30 years and remains the heart of our work.

Our future goals include:

SUSTAIN a healthy organization by engaging in practices that strengthen our capacity for service.

GROW trees that expand the tree canopy in Missouri communities.

GIVE free trees for community-based projects to improve environmental, economic, and social resilience.

EDUCATE to spark excitement and strengthen community capacity to care for trees.

INSPIRE people to become advocates for trees.

RESPOND to existing and emerging forest threats.



Elijah Belz
Stewardship Technician



Dan Billman
Nursery Specialist



Billy Haag
Forestry Manager



Emily Halpin
Office Manager



Rebecca Hankins
Partnership Manager



Jake Roeckle
Nursery Manager



Glore Ruiz
Equity & Engagement Specialist



Ellen Sulser
Volunteer Coordinator



New Board Members



Aisha Muhammad
Community Conservation Liason
Missouri Department of Conservation



Sean Pluta
Associate
Polsinelli



Staff Highlight

Forest ReLeaf's Partnership Manager, Rebecca Hankins (pictured on the right) was recognized as Earth Day 365's 2022 Emerging Environmental Leader for her outstanding work in the community!

Partner Highlight: Trash for Trees

"You can't just talk endlessly about a problem like climate change & not take some action. While it's hard for an individual to tackle the big leverage issues around climate, anyone can learn the right way to plant a tree."

- Aaron Dohogne

Aaron Dohogne (third from left) has planted 200+ trees in south St. Louis City over the last 5 years. He utilizes Forest ReLeaf's Project CommuniTree to get trees for parks but wanted to have a greater impact. So, he created the Trash For Trees campaign where he raises money from local businesses, like Garcia Properties, for picking up thousands of pieces of trash in the neighborhood. He then uses the money earned to purchase trees from Forest ReLeaf to give away free to residents wanting to plant trees in their private yards!

2022 Volunteer Groups

- Ameren
- AON
- ARC schools
- Bayer
- Commerce Bank
- Crestwood Elementary School
- Edward Jones
- Engineers Without Borders
- Enterprise
- Equifax
- Fox Grove Property Management
- Girl Scouts of America
- ICL
- KARE Camp
- International Paper
- Lutheran North High School
- Mastercard
- Mid Rivers Ethical Society
- Midwest American Water
- Missouri Master Naturalists
- One Tree Planted
- RaboAgrifinance
- Spire
- SSM Health
- Washington University in St. Louis Law School
- Willoughby Farms
- YouthWorks



Volunteer Spotlight Kristen Westley

When Kristen saw dozens of invasive Callery Pear trees growing at Orchard Farm School, she decided to do something about it. Thanks to her efforts in advocacy and education, the school district agreed to remove all 26 trees and relied on Kristen's expertise to lead the replanting effort! With two years of Forest ReLeaf volunteer experience, she confidently selected 16 species of native Missouri trees and shrubs to enhance the area's biodiversity and designed a new planting plan for this highly visible space that supports wildlife and delights students.





Project CommuniTree

Forest ReLeaf believes that cost should not be a barrier to urban forest growth. Project CommuniTree supports the ambition of all enthusiastic tree planters. Through this program, YOU can request FREE 3-gallon native trees and shrubs to plant on public and non-profit property. The trees planted in 2022 will create 238 acres of mature tree canopy across the state!



An ongoing partnership with Great Rivers Greenway supported 140 new trees along the Mississippi and St. Vincent Greenways.

DID YOU KNOW...

Most of Forest ReLeaf trees are planted on public and nonprofit property, however a small percentage of trees can be purchased each spring and fall for private yard plantings. The revenue supports more free trees for Project CommuniTree.

More Ways to Volunteer!

- In 2022, we added:
- Park maintenance projects, including mulching and pruning
- More Saturday, opportunities for working professionals, families, and students
- Corporate employee engagement experiences

Volunteer Impact



Pocketparks Transforming Vacant Lots

“Putting something on this vacant lot, including a tree, just sends a different message into the world, like ‘this lot has potential, this community has potential!’” said Samantha Smugala, President and Founder of the non-profit, Pocketparks. Pocketparks is dedicated to turning vacant city lots into beautiful and active community spaces. Forest ReLeaf was eager to support their mission and has donated over 50 trees through Project CommuniTree to date. These plantings allowed eager community members to plant a tree for the first time, expanding their knowledge of trees and their appreciation and connection to nature.

Hannibal Tree Board Tree Equity

“Hannibal has been a Tree City USA for 24 years. Our past tree plantings have focused on street trees, parks, & schools. Forest ReLeaf’s Priority ReLeaf encouraged our Tree Board to realize all neighborhoods need trees.

We now have a tree-lined entry to the Hannibal Housing apartments near Huckleberry Park.

Thank you, Forest ReLeaf, for providing our community with 12 wonderful trees.”

*Kristy Trevathan
City of Hannibal Tree Board*



Priority ReLeaf

Priority ReLeaf focuses on sites with low tree canopy in under-resourced neighborhoods, communities experiencing loss from catastrophic storms, and areas facing threats from invasive species. Environmental racism, redlining, and disinvestment have limited quality tree planting and care in many neighborhoods across the state. Priority ReLeaf provides tools for residents to receive the critical benefits of a healthy tree canopy.



In collaboration with The Nature Conservancy, Davey Resource Group, Beyond Housing, and St. Louis City Forestry, the Treesilience Initiative coordinated the removal of 34 dead trees in North St. Louis County from residential yards and 73 dead ash trees from St. Louis City Parks and will be replacing them with over 200 new native trees.

In partnership with 4theVille, the #TreeTheVille Initiative is working to address environmental injustice in the Ville, Greater Ville and Kingsway East neighborhoods by elevating the community’s tree canopy goals. Here, community volunteers helped plant and continue stewardship of 30 trees and dozens of perennials at Triangle Park, a residential greenspace in the Ville.

Forest ReLeaf worked with Missouri State Parks, Magnificent Missouri, and the Robert J. Trulaske Jr. Family Foundation, Forest ReLeaf completed our 3-year commitment to forest restoration along the Katy Trail with 200 native trees near the McKittrick and Dutzo trailheads.



Pear Buy Back

In partnership with the Missouri Invasive Plant Council and the Missouri Department of Conservation, Forest ReLeaf distributed 600 trees to a record 6 locations (Kansas City, Joplin, Springfield, Columbia, St. Louis, and Jackson) for the popular Pear Buy Back program, encouraging the public to replace invasive pear trees with more sustainable natives.

Community Plantings

With support from the Missouri Department of Conservation, generous sponsors and hundreds of volunteers, Forest ReLeaf was able to facilitate a record 16 Community Tree Planting projects in St. Louis, establishing 1,029 new trees that will add 41 acres of canopy to the region. These trees will be stewarded by Forest ReLeaf staff over the next 2 years to improve long-term success.

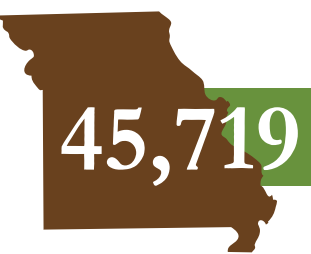
2022 Priority ReLeaf Strategic Partners

- 4theVille
- Better Family Life
- Beyond Housing
- Great Rivers Greenway
- Magnificent Missouri
- Missouri Invasive Plant Council
- Missouri State Parks
- The Nature Conservancy
- SSM Health





The 2,984 member strong Missouri Forestkeepers Network invests in the forests and woodlands of Missouri and reports their annual impact.



Acres of land cared for



11,309

Trees planted



3,523

Hours caring for trees



Hours of forest advocacy



This year the Missouri Forestkeepers Network supported the publishing of a new Tree of the Week booklet to engage and inspire the Forestkeeper network with a unique perspective on 50 Missouri native trees. In August, the annual conference field trip to Finger Lakes State Park and Barrel 53 Cooperage highlighted the significant role White Oak plays in our Missouri ecosystem and economy.



Tree Camp

Each August, Forest ReLeaf welcomes 5th and 6th grade campers for Tree Camp. In 2022, 16 campers attended and enjoyed learning about trees. Activities focused on forestry, water, soil, birds, and stewardship.



TreeKeepers

TreeKeepers offers a combination of classroom and field experience that trains participants to be stewards of their community forest. This 6-week course engaged 67 new TreeKeepers!



Canopy Crew

Forest ReLeaf's Summer Canopy Crew program exposed a diverse group of young adults to tree health and management, along with other opportunities in urban forestry. The crew spent their days in the field getting practical experience that bolstered their knowledge of the function of trees in the landscape and their direct impact on neighborhood health.

"Forest ReLeaf created a clear picture of why our work mattered and how our small contribution was significant for creating a greener world for tomorrow. This vision often carried me through some of the tedious and exhausting day-to-day work. Overall, the experience has been eye-opening and incredibly transformative."

Kieran, Canopy Crew Member

Billy Haag, Forestry Manager, leads the Canopy Crew in tree inventory to determine the success and maintenance needs of previously planted trees each summer.

Great news! Trees planted through Project CommuniTree have a survival rate* of 85%, which is considered good. Trees planted and stewarded with support from Forest ReLeaf have a 91% survival rate, which is considered excellent!

*The main causes of tree mortality are drought and vandalism.





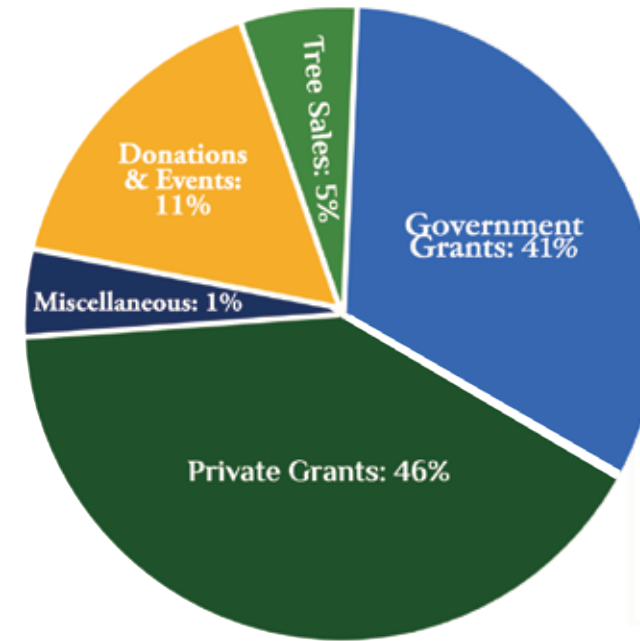
Concert in the Trees

On May 26, Forest ReLeaf hosted our Sixth Annual Concert in the Trees. The unique spin on the event combined both art and music as a way to connect individuals to Forest ReLeaf's mission and work. A new mural was unveiled by award-winning graphic designer, Jayvn Solomon (pictured on the back page) and can be seen on view when visiting Forest ReLeaf's Nursery and Arboretum. Over 200 people attended to see Janet Evra, an international jazz vocalist, bassist, and bandleader. The event continues to grow every year and raises critical funds to support our tree giveaway programs!



Arbormeisters Festival

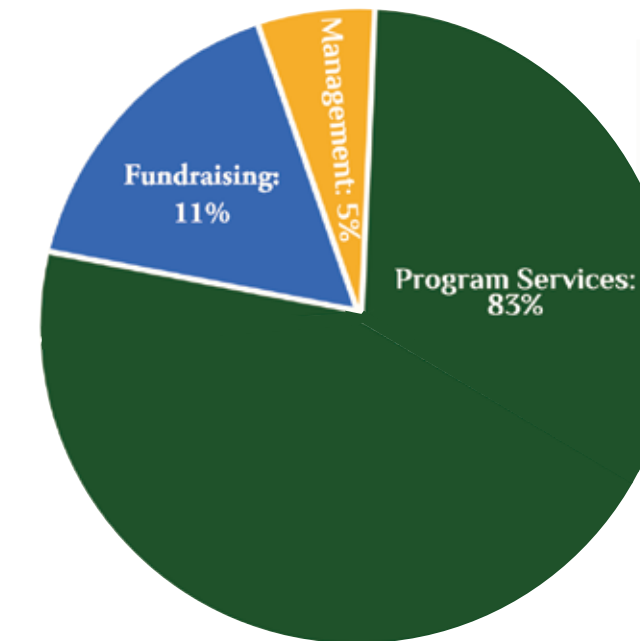
Forest ReLeaf presented the Arbormeisters Homebrew + Craft Beer Festival on September 24. The unique event requires that each brew includes an ingredient sourced from a tree. This year's winning beer was "How do You Like Dem Apples Apple Pie Sour" brewed by Shawn Campbell of the St. Charles County Society of Brewers with the runner up being the "Pecan Porter" from Brandon Bostic of Flannel Hop Brewing. The St. Charles County Society of Brewers took home the club trophy with Brewminati in second place. We look forward to hosting everyone again in 2023!



Financials

Revenue & Support \$


Government Grants	375,206
Private Grants	324,054
Donations & Events	190,348
Tree Sales	18,240
Miscellaneous/Other	7,909
Total	880,235



Expenses \$

Management & General	44,946
Program Services	649,123
Fundraising	83,525
Total	777,593
Change in Net Assets	102,641

Source: Pre-audited Quickbooks Financials.
Forest ReLeaf meets all charity standards of the Better Business Bureau's Wise Giving Alliance.



Corporate & Foundation Donors

- 4 Hands Brewing Company
- AECOM
- Ameren Corporation Charitable Trust
- Arbolope Studio
- Arbor Day Foundation
- Bellefontaine Cemetery
- Beverly Haefling Thomas Charitable Fund
- Bright Funds
- Conservation Foundation of Missouri
- Custom Foodscaping
- Davey Tree Expert Company
- David V Butruille Fund
- Droege Tree Care, Inc.
- dtls Landscape Architecture
- Federated Garden Club of Missouri
- FedEx
- Garvey Memorial Foundation
- Gaylord Foundation
- Grant Char. Trust
- Great Rivers Greenway
- Heart of Oak Foundation
- Herzog Products LLC
- Hoagland Charitable Fund
- Horwitz/Friedman Charitable Fund
- ICL Specialty Products
- James A. & Elizabeth Maritz Charitable Fund
- JM Family Enterprises Inc.
- Mastercard
- Metropolitan Forestry Services
- Missouri American Water
- One Tree Planted
- Pang Family Charitable Trust
- Parkview Horticultural Society
- Pecha Family Foundation
- Peckham Guyton Albers & Viets, Inc.
- PGAV
- Protiviti Inc
- Shade Tree Service Company
- Spire Energy
- SSM Health
- St. Louis Philanthropic Organization
- StraightUp Solar
- Sunset Hills Garden Club
- The Bellwether Foundation
- The David V Butruille Fund
- The Robert J Trulaske Family Foundation
- Trio Foundation of St. Louis
- Robert J. Trulaske, Jr. Family Foundation
- Vanguard Charitable Fund
- Victor & Selene Deliniere Charitable Foundation

1990 Inspiration Volunteers plant 10,000 trees on the Mississippi Riverfront to commemorate the 20th anniversary of Earth Day.

1993 Creation Forest ReLeaf becomes an official nonprofit organization.

1994 Flagship Programs Project CommuniTree & Priority ReLeaf are launched.

1996 Nursery Established With support from the National Tree Trust, the first "growing out station" is built near the St. Louis Airport.

1997 Community Engagement Grows The Missouri Forestkeepers Network begins in partnership with the Missouri Department of Conservation.

2004 Record Set 50,000th tree planted in Fairground Park.

2007 Nursery Relocation CommuniTree Gardens Nursery moves to St. Louis County's Creve Coeur Lake Memorial Park.

2010 Record Set 100,000th tree planted in Peace Park.

2014 Nursery Expansion CommuniTree Gardens Nursery expands with an additional 2 acres of growing space, builds a greenhouse, & installs a native prairie & rain garden.

2018 Record Set Forest ReLeaf celebrates 25 years & plants the 200,000th tree in Fairground Park.

2019 Ongoing Investments Pollinator garden & gazebo are installed along the greenway trail outside the nursery. Pear Buy Back launches.

2020 Arboretum Status CommuniTree Gardens becomes "Forest ReLeaf Nursery & Arboretum" after national arboretum designation was achieved.

2021 Water Resource Nursery irrigation is moved off municipal water thanks to a new water well. Forest ReLeaf takes on watering community planting projects.

2022 Treesilience Priority ReLeaf grows impact through the new Treesilience initiative.

2023 30th Anniversary Education Pavilion opens at Forest ReLeaf's Nursery & Arboretum.



Over the past **30** years we have...

Distributed over **245,000** trees

Added **6,200** acres of new tree canopy

Served **78** Missouri counties

Supported **3,000** community projects

2022 Tree Recipients

- | | | | | | | | |
|--|--|--|---|--------------------------------------|--|--|--|
| Ackerman School District | Chesterfield Hill HOA | City of Willard | Girl Scouts Eastern MO - Troop 2444 | Karamar Subdivision | MO Hives | Salem Lutheran Church | Taylor Dalby |
| Affton School District | Chesterfield Parks | Clay County Parks | Girl Scouts Eastern MO - Troop 0415 | Kirksville R-III School District | More Trees | Saratoga Condominium Association | Tea Room Society |
| Affton Schools-Rogers Middle School | City of Ash Grove | Claymont Estates Subdivision | Glenridge School - Clayton | KOKS Christian Radio Station | Nathan Zenser | Scout Troop 752 | The College School |
| Al Manara Academy | City of Bel-Nor / Bel-Nor Garden Corps | Cliff Cave Park | Grace and Peace Fellowship Church | Laclede Groves | Nature Lovers - St. Peter's Nature Trail | Scout Troop 892 | The Green Center |
| Alliance Water Resources | City of Boonville Parks and Rec | Cloverleaf | Grantwood Village | Lake Chesterfield HOA | New Roots Urban Farm | Second Chance Ranch | The Hill Neighborhood |
| Ally's International | City of Brentwood | Columbia Center for Urban Agriculture | Great Rivers Greenway | Lakewood Hills Subdivision | Newport Landing HOA | SEMO Foundation | Tiffany Community Association |
| Ambois Drive Bush | City of Canton | Concordia Cemetery | Green Dawgs | Linda Edwards | North Grand Neighborhood Services | Seven Oaks Subdivision | Towne South Estates Addition |
| Honeysuckle Replacement | City of Canton WWTF | Confluence Farms | Hackamore Subdivision | Longfellow Farm | Northview High School | Seven Pines Neighborhood | Truman State University |
| AmeriCorps St. Louis | City of Cassville | Confluence Zen Center | Heartland Tree Alliance | Lucky Lane Early Childhood Center | Northwest High School - PRIDE Academy | Home Improvement | U City in Bloom |
| Autumn Lakes | City of Clayton Parks | Cortex | Heritage Residents Association | Lutheran Church of the Atonement | Oakview Estates II | Sisters of Mercy | University of Missouri - Kansas City |
| Baden Community Vegetable Garden | City of Columbia Parks and Rec | Country Lane Woods HOA | Hermann United Methodist Church | Lutheran Church of the Good Shepherd | Old North St. Louis | Sisters of St. Joseph of Carondelet | Valley Oaks Subdivision |
| Bethel Hills Community | City of Desloge | Covington Common Ground | Lutheran Development Group | Lutheran Senior Services | Old Woodsmill Manor | Southwest Garden Association | Valley View Subdivision |
| Brightside St. Louis | City of Florissant | Dogtown Community Garden | Laclede Groves Community Garden | Lutheran Church of the Good Shepherd | Olivette in Bloom | Springfield Public Schools | Village on Conway |
| Boy Scout Troop 303 | City of Goodman | EarthDance Farm | Maple Acres Subdivision | Lutheran Senior Services | Park Place, Fountain Park Neighborhood Association | St. Charles County Master Gardeners | Volker Neighborhood Association |
| Boy Scout Troop 344 | City of Grain Valley | Endangered Wolf Center | Mason Ridge Elementary PTO | Laclede Groves Community Garden | Pendleton Homeschool Garden Club | St. Charles County Parks | Webster Groves Historical Society |
| Boy Scouts - Greater STL Area Council | City of Jackson | Episcopal Diocese of Missouri | Meta Southside Cemetery | MO Hives | Pheasant Run Residents Association | St. John's Lutheran Church/School | West End/Theodosia and West Belle Beautification |
| Bridle Creek Subdivision | City of Jennings | Eureka High School Science Club | Metro Community College - Maple Woods Campus | MO Hives | Pocketparks | St. Louis County Parks | Westbury Manor Subdivision |
| Brookfield junction park | City of Joplin | Fairfield Estates | Milton's Trees | MO Hives | Principia School | St. Louis County Parks | Westfield Woods HOA |
| Brown Cemetery | City of Kirkville Parks and Rec | Fenton Flyers Disc Golf | Miriam Academy | MO Hives | Protiviti | St. Louis Disc Golf Club | Westminster Place Association |
| Bryan Middle School - Francis Howell School District | City of Lake Saint Louis Parks Dept | Ferguson Parks and Recreation | Missouri Conservation Corps | MO Hives | Queen Anne Village HOA | St. Louis Elks Lodge #9 | William Ehrhard Association |
| CAASTLC's Seeds of Hope Farm | City of Olivette | Ferguson Volunteer Flower Dept | Missouri Department of Conservation | MO Hives | Royal Club of Lebanon | St. Louis Zoo | Willow Walk Subdivision HOA |
| Camp Trinity INC | City of Shrewsbury | Friends of Bellerive Boulevard | Missouri Master Naturalist/Confluence Chapter | MO Hives | Royalgate Subdivision | St. Margaret of Scotland School | Winterset Community Association |
| Cardinal Ritter College Prep | City of Springfield Public Works | Friends of Belleview Park | Missouri Stream Team - Team #5841 | MO Hives | Rusche Park Board | St. Michael the Archangel | Wohlwend Elementary School |
| Carman Trails Elementary School PTO | City of St. Ann | Friends of Francis Park | Missouri Veterans Cemetery | MO Hives | Russell Elementary School | St. Peters Church | Woody Albro |
| Cassville FFA | City of St. Peters Parks Dept | Friends of Hidden Waters Inc | MO Hives | MO Hives | Saint Paul's U. C. C. Oakville | State Parks - Treloar | Wren Hollow PTO |
| Central Primary School | City of Sunset Hills | Friends of the Market Community Garden | MO Hives | MO Hives | Sustainable in St Louis | Ste. Genevieve County Community Center | Yeyo Arts Collective |
| Chapel of the Lake | City of Washington | Fulton Stream Team | MO Hives | MO Hives | Tau Lambda Sigma | | |
| Chapel Woods HOA | City of Waynesville | German Cultural Society | MO Hives | MO Hives | | | |
| | City of Webster Groves | Girl Scout Troop 089 | MO Hives | MO Hives | | | |
| | City of Weldon Spring | | MO Hives | MO Hives | | | |



Forest ReLeaf of Missouri
4168 Juniata St. Suite 1
St. Louis, MO 63116
moreleaf.org



Local designer and muralist, Jayvn Solomon, helped bring some attention to the front door of Forest ReLeaf's Nursery and Arboretum.

Artist statement: This piece titled "RELEAF" represents the deep-rooted imprint trees have on our lives and the role we play in cultivating a healthy life cycle for us and nature. The letters "RELEAF" morph into illustrations of swirling tree roots and tree trunks, demonstrating how interconnected everything is in our ecosystem. The larger line work resembles a fingerprint, reinforcing the distinct way trees touch and leave a mark on our lives. Like fingerprints, each of us has a good, unique experience and relationship with trees. Aligning with Forest ReLeaf's mission, the intent of this mural is to inspire those who are willing to turn those unique experiences into life-generating action for trees -- a win-win for all of us!