

Hello, Tree Planter!

You've taken the first step toward greening your community! It's up to you to promote your trees long-term health, resiliency and survivability.

Call before you dig:

- DIG RITE: 1-800-344-7483 (Missouri)
- J.U.L.I.E.: 1-800-892-0123 (Illinois)
- 811 (Kansas)

Get Permission

Consult the your municipality's forestry/ public works department or the property owner before planting.

Transporting

- Always cover trees exposed to the elements to prevent windburn and leaf loss.
- Always carry trees by the pot to prevent damage to the roots.
- Do not leave trees covered in a vehicle for extended periods of time.
- Keep roots moist until planting.



Incorrect **Correct**

Get to Know Your Tree

Read the tree tag to learn about the species and whether the tree can be planted under or near utility lines.

Plot Your Trees

Help Missouri plant (and plot!) one million trees! Head over to www.plantmotrees.org to add your trees and track their growth.

Planting Your Tree



1 Dig a Hole

- The hole should be at least twice as wide and the same depth as the root ball.
- Tip: Lay your shovel across the hole. The shovel should lay flat across the root ball and ground.



3 Fill the Hole Up!

- Use the same soil you dug out of the hole to fill the hole back up.
- Do not stomp or tamp the soil too tight.



5 Mulch

- Mulching reduces weeds and grass, retains moisture, and protects from lawnmowers.
- Mulch a ring about the size of the hole, no more than 3" deep.
- Do not pile mulch against the trunk as this will encourage fungal growth.
- The mulch ring should look like a "donut" with the trunk growing in the middle.

6 Maintenance

Pruning

- Prune only dead/broken branches for the first year after the tree was planted.
- Additional pruning may stress the tree.
- For future pruning, consult a professional.

Staking

- Stake trees only when necessary such as in very windy areas.
- Remove all staking after one year.

Long Term Maintenance

- Visit your tree regularly to water, weed, mulch, prune, and check for problems.



2 Cut the Roots

- Cut any roots that are circling the root ball and loosen up the soil.
- If left alone, roots will continue to grow in a circle and eventually kill the tree.



4 Water the Tree

- Trees **MUST** be watered after planting.
- A long soaking with a hose is best.
- Give your tree 5 gallons of water each week for its first 3 years if there is limited rainfall.

Benefits of Trees

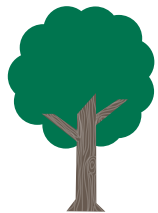
In the U.S., trees prevent
\$7 Billion
in health costs annually!

Trees can cut air conditioning costs by up to 30%!

One acre of forest absorbs
6 Tons
of carbon dioxide and puts out
4 Tons
of oxygen



Trees cool city streets by up to 10 degrees



Nationally, there are
60 Million
street trees with an
average value of **\$525**
per tree

Trees add an average of 10% to a property's value

A mature tree can capture
1,385 Gallons
of stormwater each year
and so much more!

Source: Arbor Day Foundation

Tree Planting Guide



www.moreleaf.org

About Forest ReLeaf

Forest ReLeaf of Missouri operates CommuniTree Gardens, the only nonprofit community-assisted nursery in the region. Since our inception in 1993, over 200,000 trees have been planted.

Projects have:

- Increased tree canopy in low-income areas.
- Assisted with reforestation after natural disasters or in response to invasive pests.
- Promoted peace and healing in our communities.

Programs:

Project CommuniTree makes native species trees available for FREE for planting on public or nonprofit owned land. Apply at moreleaf.org/plant

Priority ReLeaf provides larger trees, at no cost, to underserved and disaster-affected areas.

ReLeaf Fundraising offers trees for private land for a suggested donation.

Volunteer!

None of this would be possible without our dedicated volunteers at CommuniTree Gardens, and across the region. Join us at moreleaf.org/volunteer

Major Support Provided By:



and people like you!
Visit moreleaf.org/give
to help sustain Forest ReLeaf